

Lua

Rich Brown
Trans. Brad Cheeseman

$\text{♩} = 150$

6
10
14
18
22
26
30
34

IV
III IV V
V

38

42

46

III

IV

V

50

53

56

60

64

68

72

76

Bass clef, key signature of two flats (Bb, Eb). The staff contains a sequence of eighth notes: Bb, Bb, Bb, Gb, Gb, Gb, Fb, Fb, Fb, Eb, Eb, Eb, D, D, D, C. There are three slurs over the first three groups of three notes.

80

Bass clef, key signature of two flats (Bb, Eb). The staff contains a sequence of eighth notes: Bb, Bb, Bb, Gb, Gb, Gb, Fb, Fb, Fb, Eb, Eb, Eb, D, D, D, C. There are three slurs over the first three groups of three notes.

83

Bass clef, key signature of one sharp (F#). The staff contains a sequence of eighth notes: F#, F#, F#, E, E, E, D, D, D, C, C, C, B, B, B, A. There are slurs over the first three groups of three notes. Fingerings 1 and 4 are indicated above the first and fourth notes of the fourth group. A breath mark (v) is above the eighth note. A '4' is written below the staff.

86

Bass clef, key signature of one sharp (F#). The staff contains a sequence of eighth notes: F#, F#, F#, E, E, E, D, D, D, C, C, C, B, B, B, A. There are slurs over the first three groups of three notes.

90

Bass clef, key signature of one sharp (F#). The staff contains a sequence of eighth notes: F#, F#, F#, E, E, E, D, D, D, C, C, C, B, B, B, A. There are slurs over the first three groups of three notes.

94

Bass clef, key signature of one sharp (F#). The staff contains a sequence of eighth notes: F#, F#, F#, E, E, E, D, D, D, C, C, C, B, B, B, A. There are slurs over the first three groups of three notes.

98

Bass clef, key signature of one sharp (F#). The staff contains a sequence of eighth notes: F#, F#, F#, E, E, E, D, D, D, C, C, C, B, B, B, A. There are slurs over the first three groups of three notes.

102

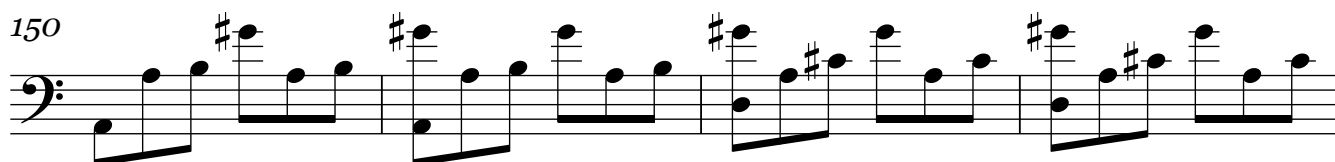
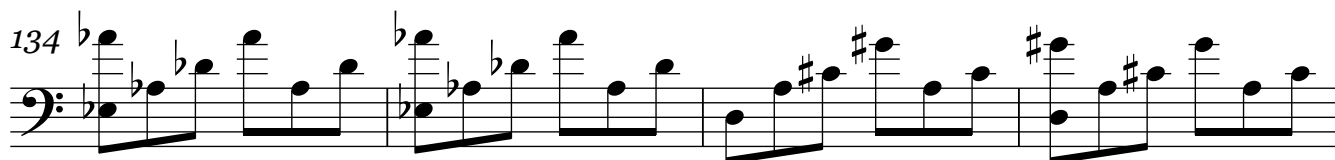
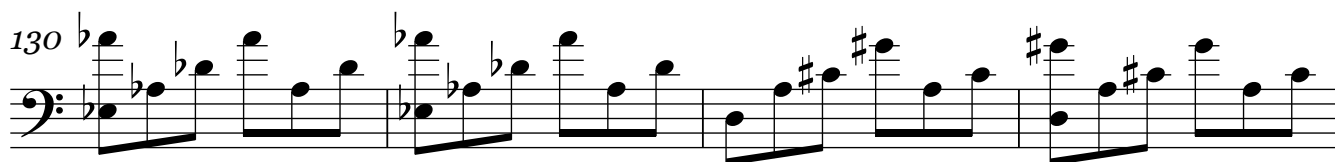
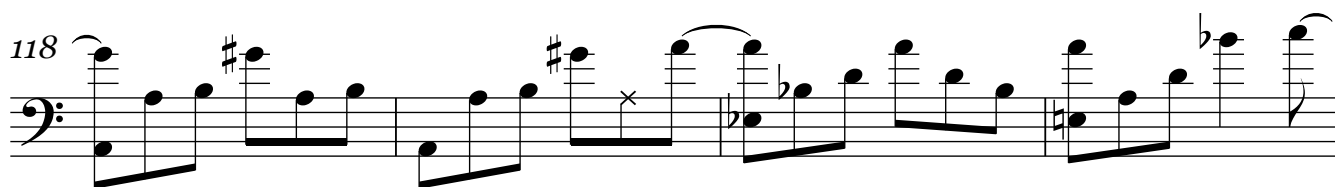
Bass clef, key signature of two flats (Bb, Eb). The staff contains a sequence of eighth notes: Bb, Bb, Bb, Gb, Gb, Gb, Fb, Fb, Fb, Eb, Eb, Eb, D, D, D, C. There are slurs over the first three groups of three notes.

106

Bass clef, key signature of two flats (Bb, Eb). The staff contains a sequence of eighth notes: Bb, Bb, Bb, Gb, Gb, Gb, Fb, Fb, Fb, Eb, Eb, Eb, D, D, D, C. There are slurs over the first three groups of three notes. An 'x' is above the eighth note, and a circled 'x' is above the final note.

110

Bass clef, key signature of two flats (Bb, Eb). The staff contains a sequence of eighth notes: Bb, Bb, Bb, Gb, Gb, Gb, Fb, Fb, Fb, Eb, Eb, Eb, D, D, D, C. There are slurs over the first three groups of three notes. A circled 'x' is above the eighth note.



154

158

162

166

170

173

rit.